

**NETZSCH**

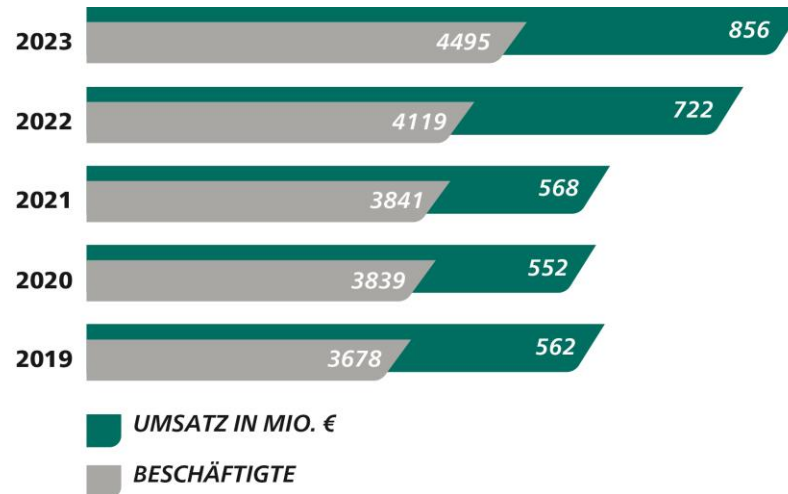
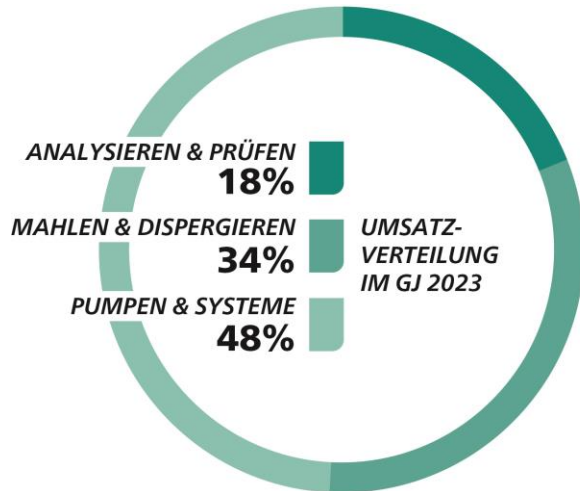
Proven Excellence. ■

## Short Profile

---

The owner-managed NETZSCH Group is a leading technology and development company specializing in machine and device construction. The core competencies of the Selb-based technology and development company lie in the field of mechanical and instrument engineering. The business units Analyzing & Testing, Grinding & Dispersing, and Pumps & Systems stand for individual solutions at the highest level. More than 4,600 employees in 36 countries and 210 production, sales and service companies worldwide ensure customer proximity and competent service.

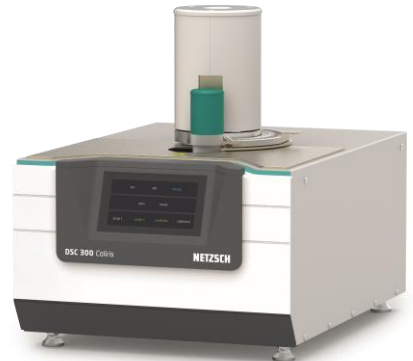
Our performance standards are high. We promise our customers Proven Excellence - outstanding performance in all areas. This applies both externally and within the company. Excellent product quality can only be achieved through excellent performance by all NETZSCH employees. We have been proving that we can do this for over 150 years.



## Analyzing & Testing

Space exploration, the use of fuel cells or hydrogen-powered vehicles - before technical progress can begin, research, analysis, measurement and optimization are required. Basic knowledge about physical and chemical properties such as phase transformation temperatures and melting points, expansion behavior or thermal conductivity of solids and liquids can be determined quickly and easily using thermal analysis methods.

The "Analyzing & Testing" division develops and produces a comprehensive range of devices for the temperature range from -260 °C to 2800 °C for this purpose. The analyzers are used worldwide in research, development and quality control.



## Grinding & Dispersing

Colors make our lives more colorful, chocolate melts in our mouths and perfect make-up ensures a radiant appearance - the "Grinding & Dispersing" division offers a comprehensive range for all tasks in mechanical process engineering. The division is primarily active in the areas of wet and dry grinding, mixing, dispersing, deaerating and classifying.

The laboratory and production machines as well as complete production lines are used in almost all areas of industry, such as in pioneering nanotechnology, for the production of printing inks, minerals or foodstuffs. The bundling of process engineering know-how, the extensive machine program, the solution of customer-specific tasks and the worldwide presence are unique and thus the strength of the business units.



# Business Units

---

## Pumpen & Systeme

Yoghurt with whole fruit, paints and varnishes, oil and all kinds of slurries - NETZSCH pumps are used worldwide to convey these and many other raw materials and products that are part of people's everyday lives.

NETZSCH ensures that these different media - from liquid to viscous - are conveyed gently. Specialists from five business areas - Food & Pharmaceuticals, Chemicals & Paper, Dosing Technology, Environment & Energy and Oil & Gas - provide advice on the numerous applications in which NETZSCH pumps are used. Experience and innovation, quality and service as well as a worldwide production, sales and service network are the basis for our global market and technology leadership.



NEDGEX is the "new edge" in the NETZSCH Group's digital strategy. As a digital innovation laboratory, the incubator for digital innovations works in line with the entrepreneurial mindset of the NETZSCH founders. It promotes initial concepts until they are ready for the market and establishes new business models. NEDGEX offers a protected framework that provides the necessary methods, expertise, speed and structure.

The first venture has already been successfully implemented: sensXPERT



NETZSCH Corporate Communications will be happy to answer any questions journalists may have about the company, products or publications. We look forward to your inquiry.



**Svenja Fröhlich**

Communication Manager

[svenja.froehlich@netsch.com](mailto:svenja.froehlich@netsch.com)

+49 9287 / 75-169



**Yann Jeschke**

Director Group Corporate Brand & Communications

[yann.jeschke@netsch.com](mailto:yann.jeschke@netsch.com)

+49 9287 / 75-160